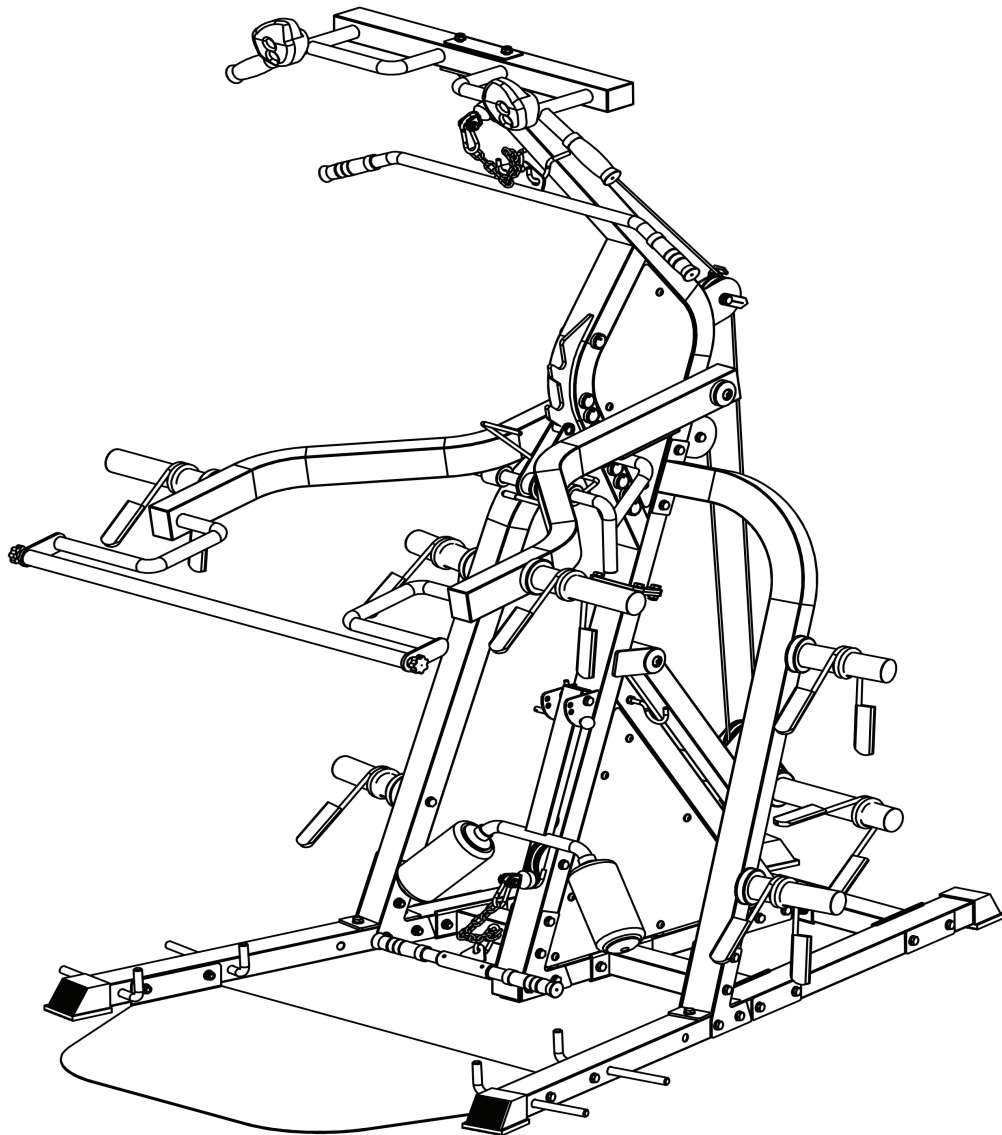


**BRUTE<sup>®</sup>**  
*force*  
AUSTRALIA

# **Multi-Functional Leverage Trainer**

RAPT



***Owner's Manual***

# Content

<b>Content</b>	<b>1</b>
<b>Safety precautions</b>	<b>2</b>
<b>Part List</b>	<b>3</b>
<b>Assembly</b>	<b>4-11</b>
<b>Maintenance</b>	<b>12</b>

## ***Safety Precautions***

### **Safety First**

Regardless of how enthusiastic you may be about getting on your equipment and exercising, take the time to ensure that your safety is not jeopardized. A moment's lack of attention can result in an accident, as can failure to observe certain simple safety precautions.

1. Read, study and understand the Owner's Manual and all the warning labels on this product. Furthermore, it is recommended to familiarize yourself and others with the proper operation and workout recommendations for this product prior to use. Some of this information can be obtained in this Owner's Manual, as-well-as from your local retailer.
2. It is imperative that you retain this Owner's Manual and be sure all warning labels are legible and intact. Replacement Owner's Manuals and labels are available from your local retailer.
3. It is recommended that another person assist you with the assembly of this unit.
4. Consult with your physician before beginning any exercise program.
5. Use proper discretion when children are present.
6. Frayed or worn cables can be dangerous and may cause injury. Periodically check these cables for any indication of wear.
7. Keep hands, limbs, loose clothing and long hair well out of the way of moving parts.
8. Do not attempt to lift more weight than you can control safely.
9. Inspect the machine for any sign of wear on parts, hardware becoming loose or cracks on welds. If a problem is found do not use or allow the machine to be used until the defective part is repaired or replaced.
10. You can use the WRENCH and the INNER HEX WRENCH to complete the assembly.

## ***Part List***

Key	Description	Qty.	Key	Description	Qty.
1	Base Frame	1	2	Side Base frame	2
3	Big Stand Frame	1	4	Big Stand Frame Connector	2
5	Plate	5	6	Hex Bolt M10*90	27
7	Nylon Lock Nut 10	51	8	Washer $\Phi 10$	104
9	Bending Tube(up)	1	10	Up Cross Tube	1
11	Climber Grips(L)	1	12	Climber Grips(R)	1
13	Hex Bolt M10*16	4	14	Sleeve $\Phi 32*\Phi 25*30$	1
15	Hex Bolt M10*75	3	16	Support Tube(R)	1
17	Support Tube(L)	1	18	High Pull Barbell Welding	1
19	High Pull Connect Shaft	1	20	Hex Bolt M10*25	8
21	Hex Socket Head Bolt M10*40	4	22	Comfort Grip $\Phi 28$	2
23	Spring Clip	8	24	Push Handle(L)	1
25	Push Handle(R)	1	26	Limit Rod $\Phi 25$	1
27	Double Push Safety Rod $\Phi 25$	1	28	Steel Cap $\Phi 54$	4
29	Hex Socket Head Bolt M10*20	4	30	High Pull Handle	1
31	Cable	1	32	Barbell Plate Inner Shaft	4
33	Coil Chain	2	34	Pulley	5
35	Connection Rod	1	36	Adjuster Tube	1
37	Ball Head Pin	1	38	Deep Groove Ball Bearings 6005	6
39	Decorate Shield	6	40	Rear Decorate Shield	2
41	Down Shield Plate	2	42	Up Shield Plate	2
43	Foot Board	1	44	L Shape Pin	4
45	Steel Bushing $\Phi 32*\Phi 25*7$	2	46	Plug 60*60	1
47	Foot End Cap	4	48	Buffer $\Phi 39*41$	1
49	Buffer $\Phi 38*7$	1	50	Hex Socket Head Bolt M8*30	1
51	Hex Bolt M10*95	4	52	Screw Knob	2
53	Plug 70*50	1	54	Buffer $\Phi 76*16$	1
55	Round Plug $\Phi 50$	1	56	Washer $\Phi 32*1$	2
57	Buffer 160*45	2	58	Tapping Screw $\Phi 4.2*19$	8
59	Hook Welding	1	60	Plastic Cap $\Phi 10*36$	1
61	Circlip 35	1	62	Hex Bolt M10*85	6
63	Hex Bolt M10*55	1	64	Plastic Cable Limiter	2
65	Plastic Bushing For Cable Limiter $\Phi 22*6$	2	66	Hex Bolt M10*45	2
67	Steel Bushing $\Phi 16*23$	4	68	Lat Pull Down Bar	1
69	Handlebar Tube	1	70	Comfort Grip $\Phi 25$	4
71	Snap Link	4	72	Washer $\Phi 78*3$	
73	Foam Roller	2	74	Foam Roller Cap(small hole)	2
75	Foam Roller Cap(big hole)	2	76	Hex Socket Head Bolt M8*20	2
77	Nylon Washer $\Phi 24*\Phi 10*2$	2	78	Plug 50*25	1
79	Hook	2	80	Nut M8	2
81	Washer $\Phi 8$	24	82	Hex Socket Head Bolt M8*12	22
83	Hex Bolt M10*30	2	84		

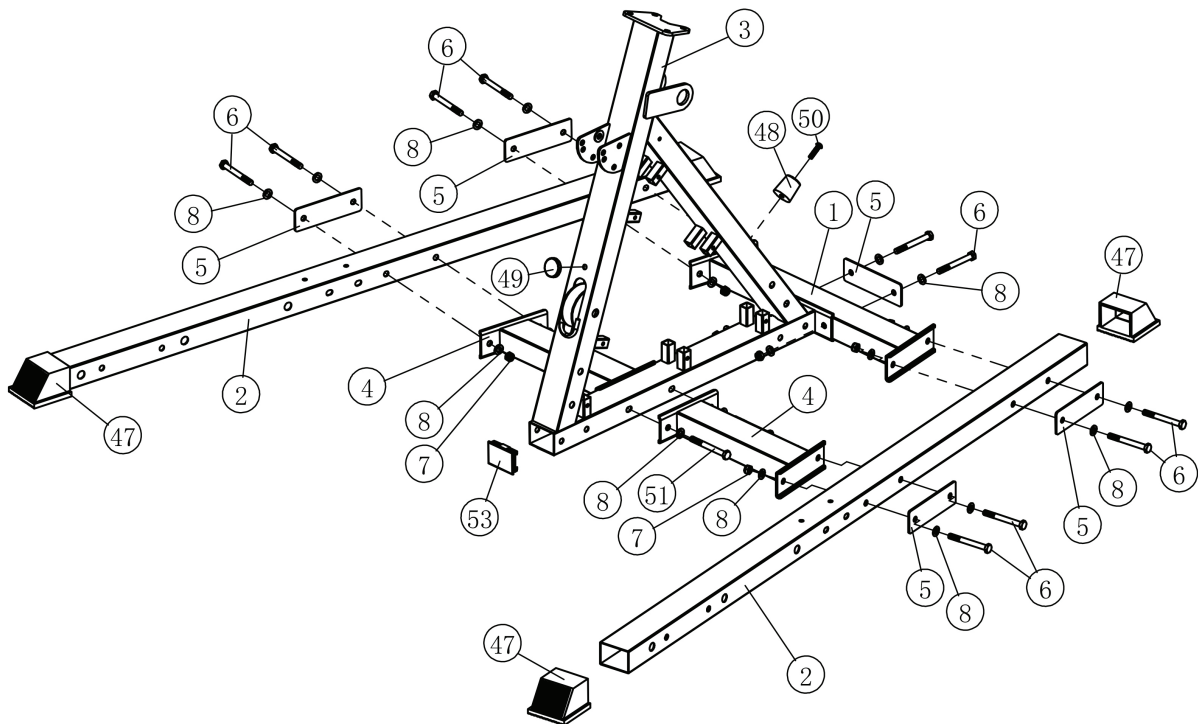


# *Assembly Instruction*

**Note:**

1. Washer should be placed on both ends of all bolts (against the head of the bolt and against the nut) unless otherwise specified in these instructions.
2. Hand tighten all bolts on initial assembly and finally tighten with the wrench once the entire structure is erect.
3. Water or soap makes the assembly of foam easier.
4. Some parts may be pre-assembled at the factory.
5. Assembly requires the assistance of another person.

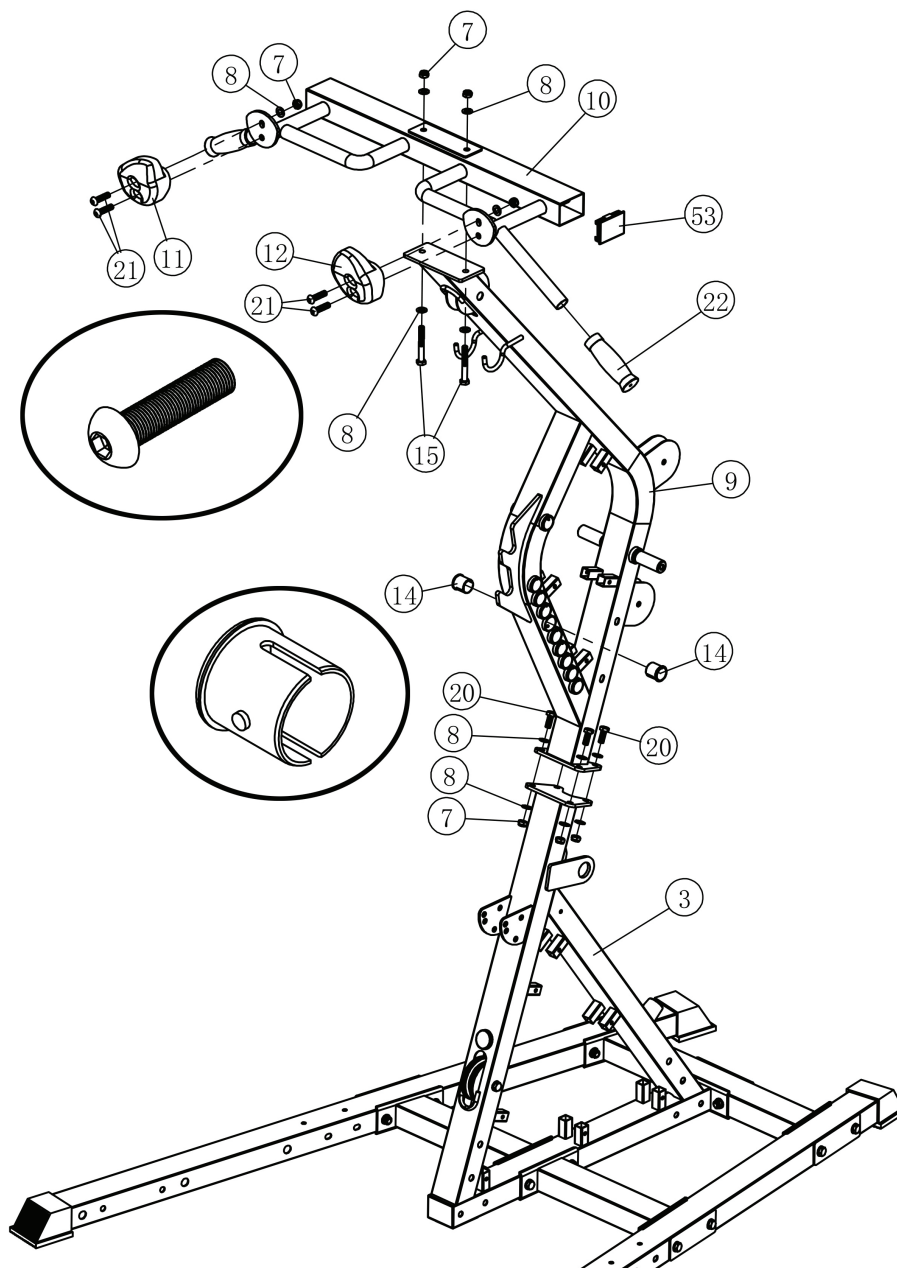
## Step 1



Key No.	Description	Qty.
6	Hex Bolt M10*90	10
7	Nylon Lock Nut M10	12
8	Washer Φ 10	24
50	Hex Socket Head Bolt M8*30	1
51	Hex Bolt M10*95	2

# Assembly

## Step 2

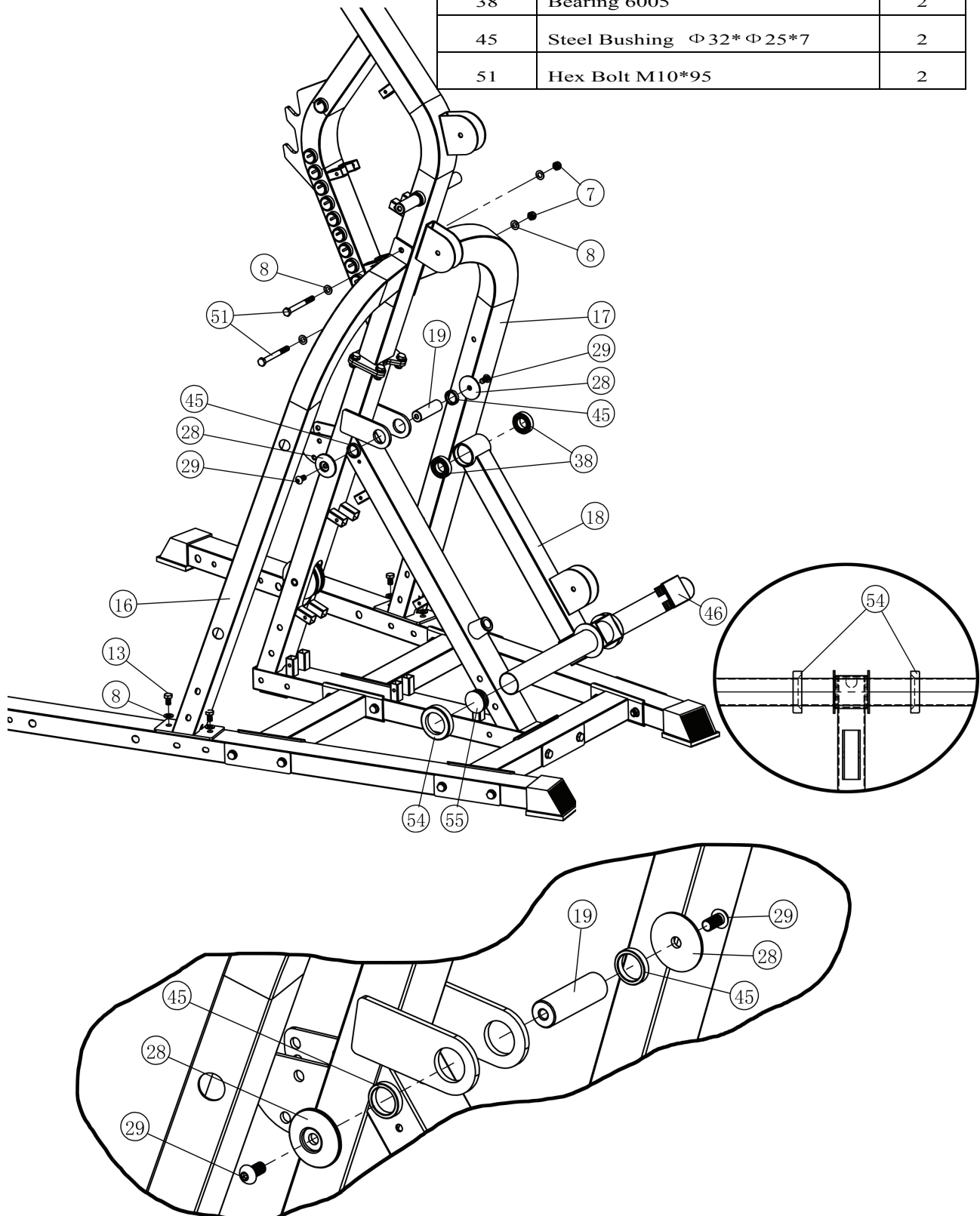


Key No.	Description	Qty.
7	Nylon Lock Nut M10	8
8	Washer $\Phi$ 10	14
15	Hex Bolt M10*75	2
20	Hex Bolt M10*25	4
21	Hex Socket Head Bolt M10*40	4

# Assembly

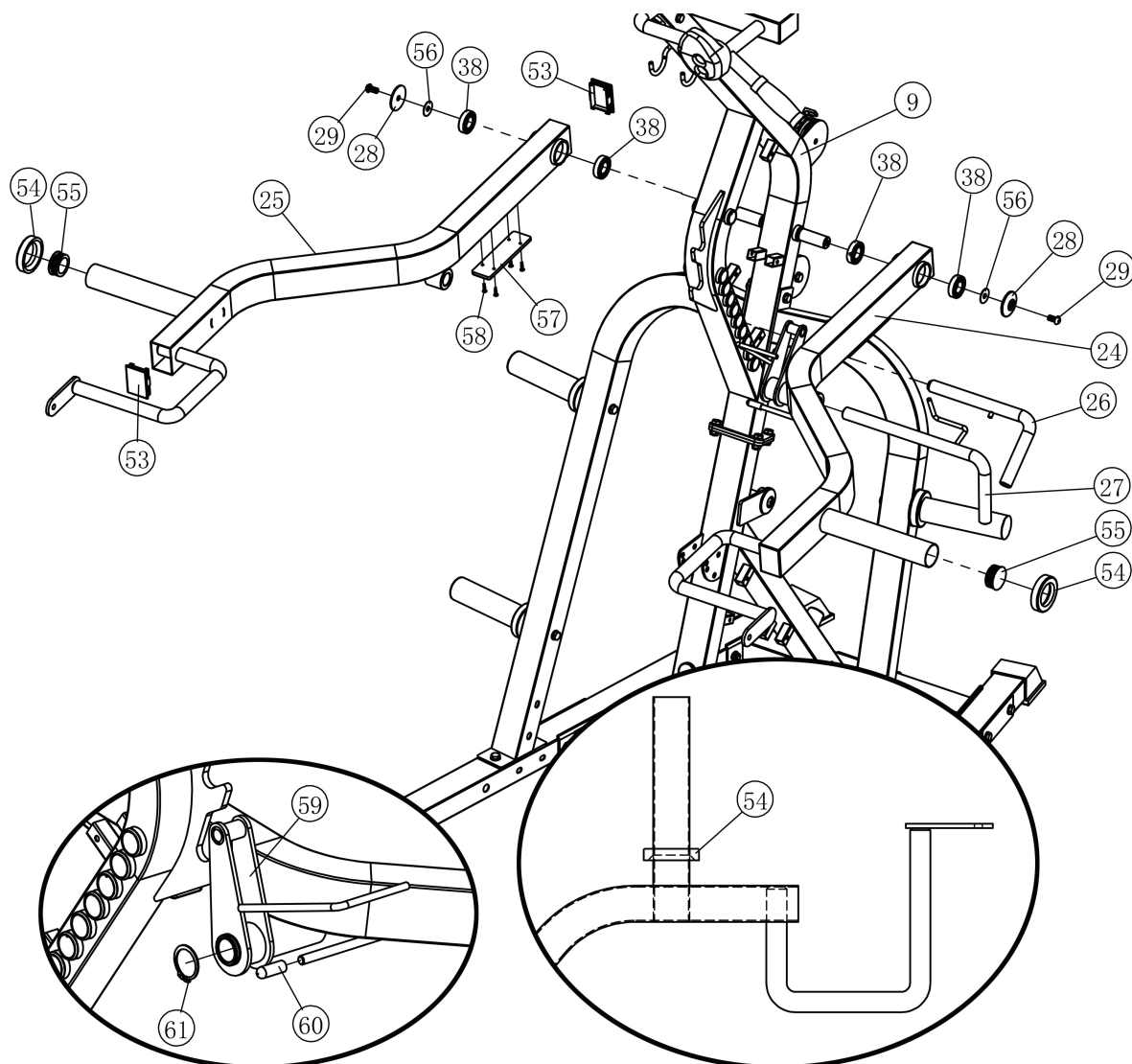
## Step 3

Key No.	Description	Qty.
7	Nylon Lock Nut M10	2
8	Washer $\Phi 10$	8
13	Hex Bolt M10*16	4
29	Hex Socket Head Screw M10*20	2
38	Bearing 6005	2
45	Steel Bushing $\Phi 32*\Phi 25*7$	2
51	Hex Bolt M10*95	2



# Assembly

## Step 4

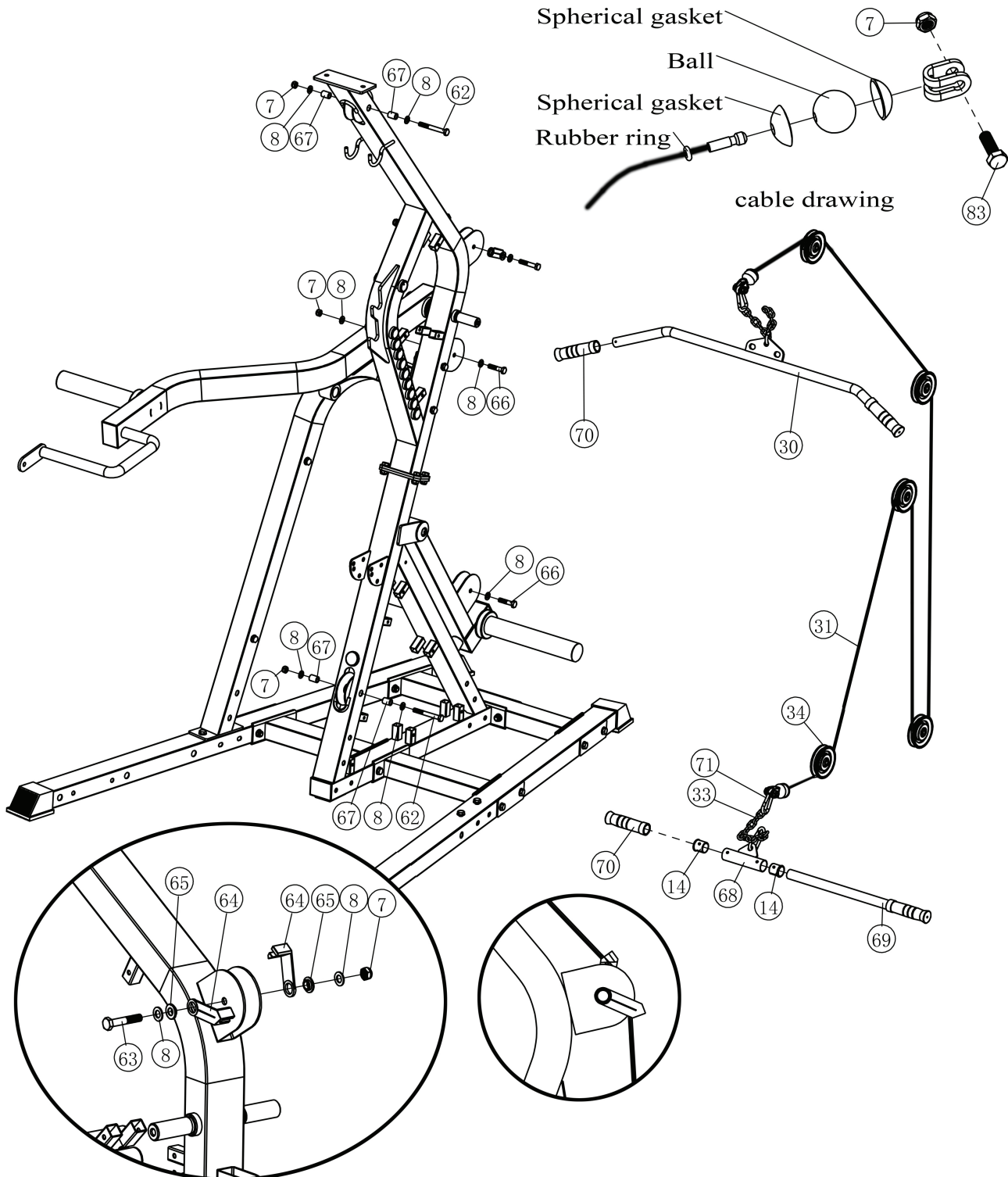


Key No.	Description	Qty.
29	Hex Socket Head Bolt M10*20	2
38	Bearing 6005	4
56	Washer $\Phi 32*1$	2
58	Tapping Screw $\Phi 4.2*19$	8
61	Circlip 35	1

# Assembly

## Step 5

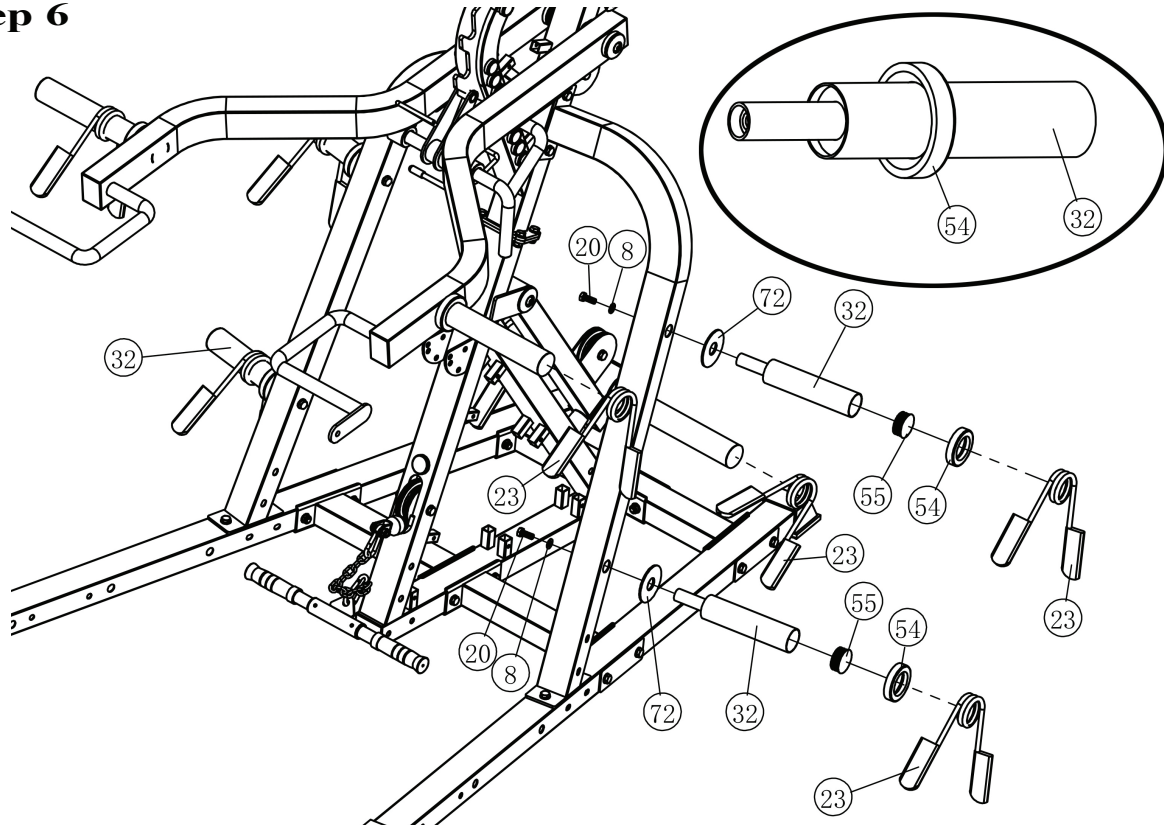
### CABLE DIAGRAMS



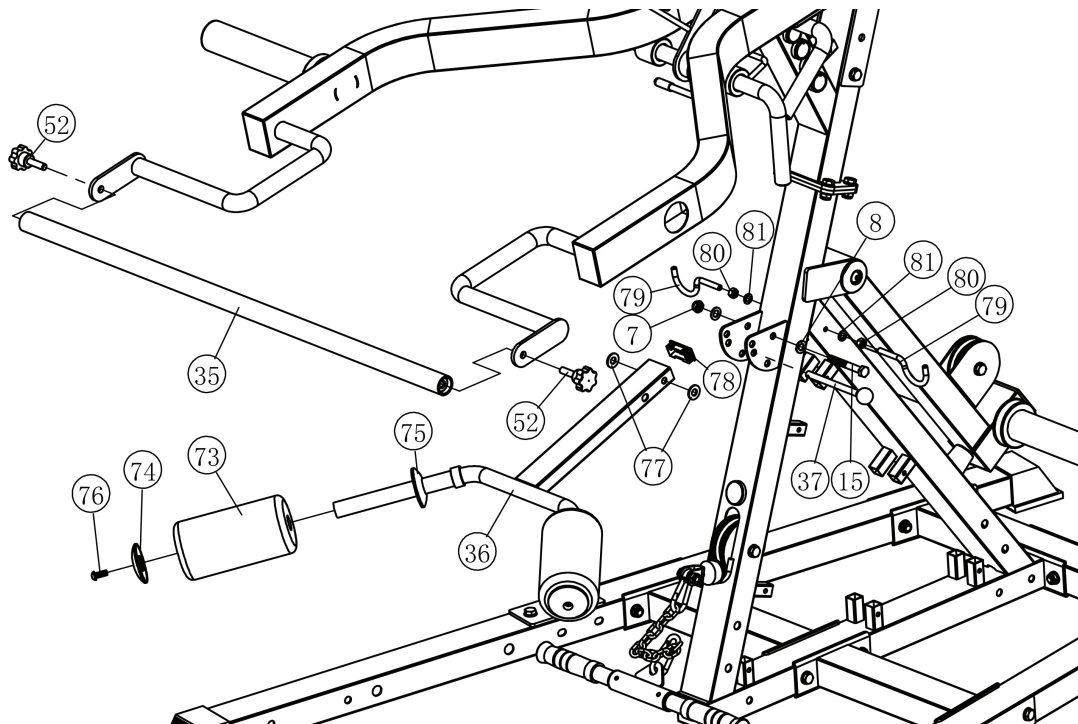
Key No.	Description	Qty.	Key No.	Description	Qty.
7	Nylon Lock Nut M10	7	8	Washer Φ 10	10
33	Coil Chain	2	62	Hex Bolt M10*85	2
63	Hex Bolt M10*55	1	66	Hex Bolt M10*45	2
67	Steel Bushing Φ 16*23	4	71	Snap Link	4
83	Hex Bolt M10*30	2			

*Assembly*

### Step 6



### Step 7

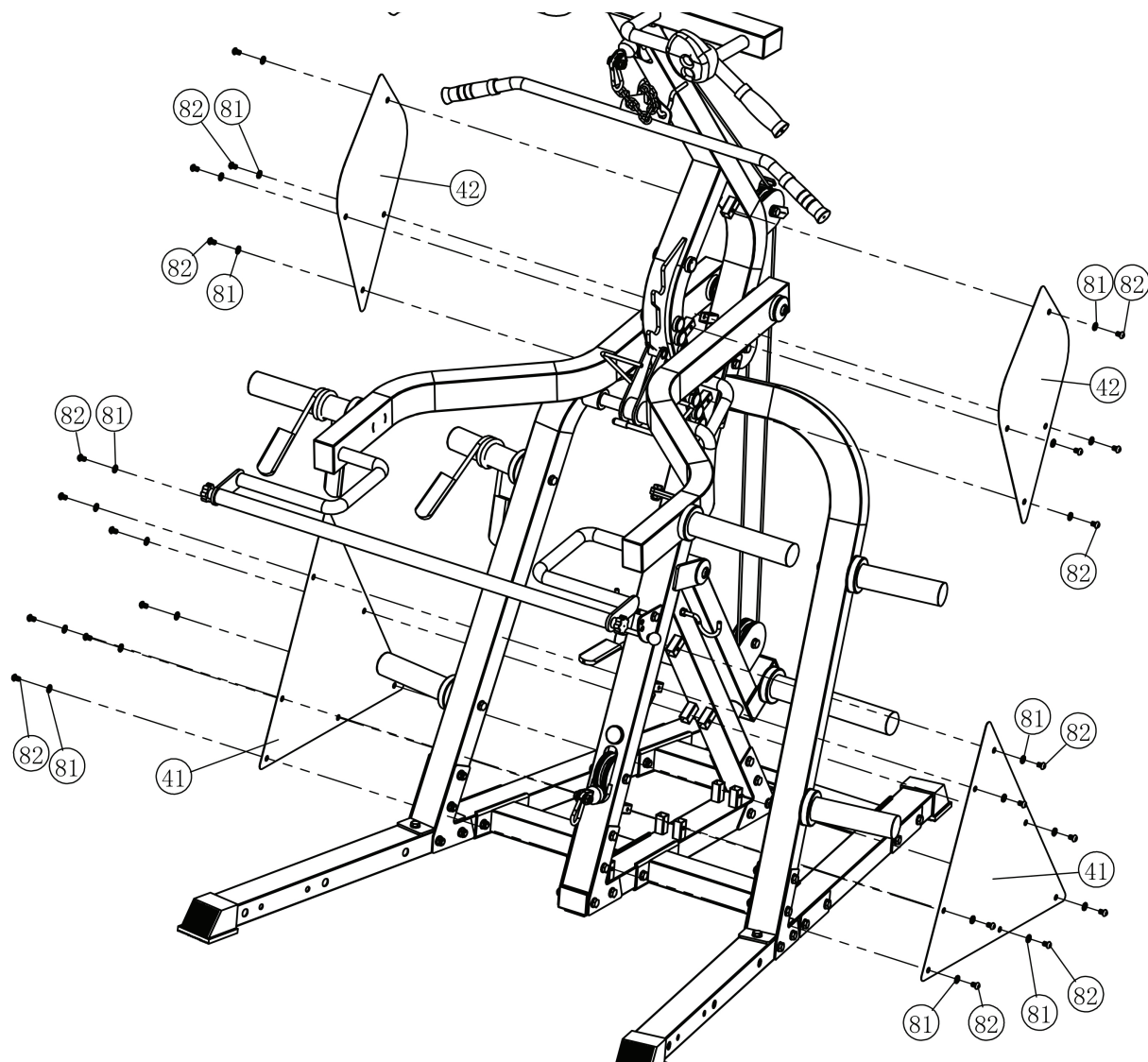


Key No.	Description	Qty.	Key No.	Description	Qty.
7	Nylon Lock Nut M10		8	Washer Φ 10	6
15	Hex Bolt M10*75	1	20	Hex Bolt M10*25	4
37	Ball Head Pin	1	72	Washer Φ 78*3	4
76	Hex Socket Head Bolt M8*20	2	77	Nylon Washer Φ 24* Φ 10*2	2
80	Nut M8	2	81	Washer Φ 8	2



# Assembly

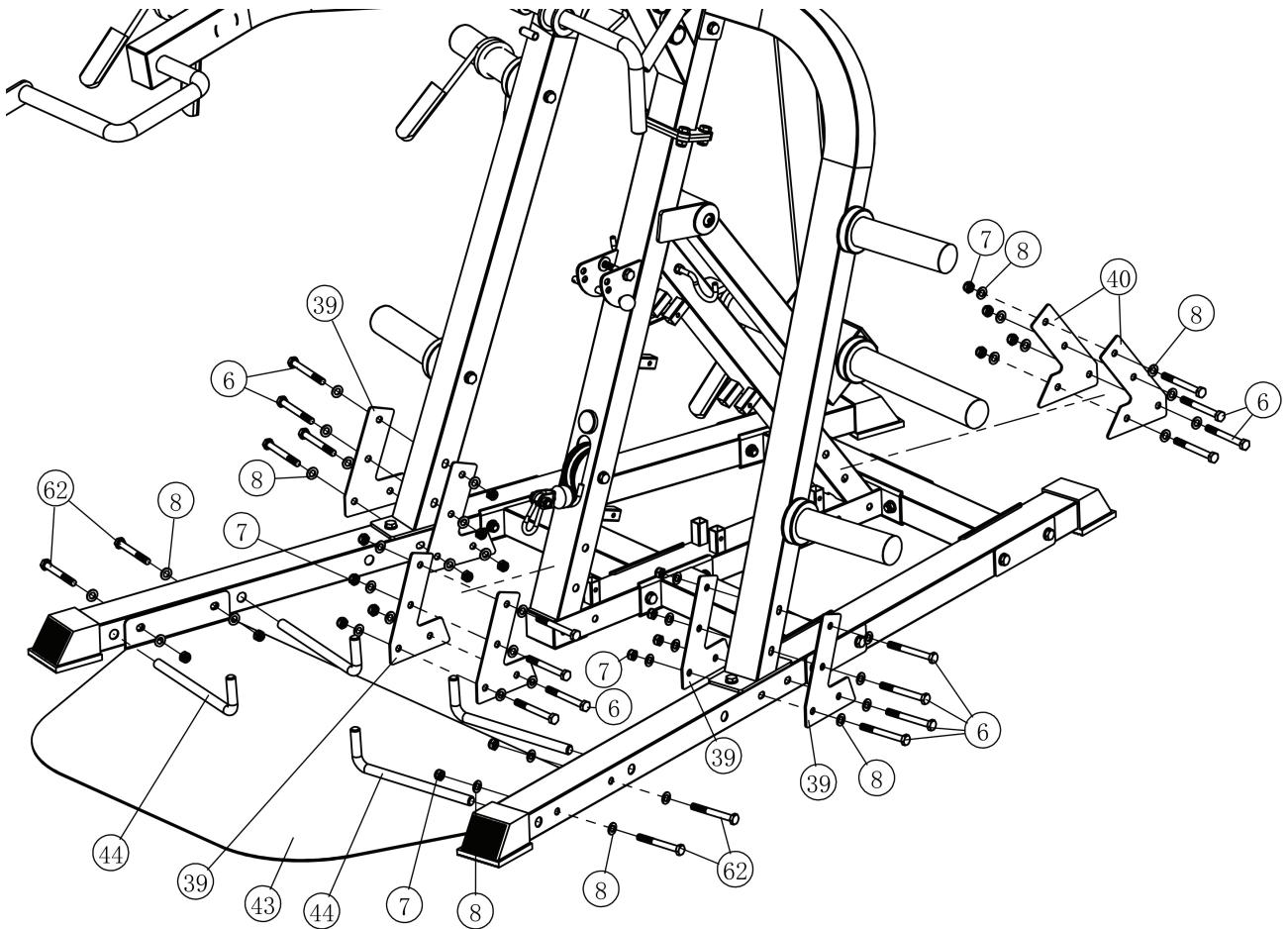
## Step 8



Key No.	Description	Qty.
81	Washer $\Phi 8$	22
82	Hex Socket Head Bolt M8*12	22

# Assembly

## Step 9



Key No.	Description	Qty.
6	Hex Bolt M10*90	16
7	Nylon Lock Nut M10	20
8	Washer Φ 10	40
62	Hex Bolt M10*85	4

**Wrench to tighten all bolts and nuts.**

**The machine should now be fully assembled.**

**Please check that all bolts are tight and cables are seated correctly on all pulleys before using.**



## ***Maintenance***

### **Maintenance Information**

1. Lubrication of all moving parts is essential to the longevity and optimal performance of your Machine.  
Initial lubrication of some parts of your gym has been done at the factory.

**Note:** Do not use oil based lubricants as they will attract dust, dirt and grime, and will eventually gum up and erode bushings and sealed bearings.

2. All pulleys and bushings should be checked regularly for signs of wear.

3. Check and adjust cable tension periodically as it will maintain proper anatomical function.

4. Periodically check all moving parts, upholstery and grips for signs of wear or damage. If there is a problem or replacement part which is necessary, STOP USING THE EQUIPMENT and immediately contact your local retailer. Replace parts using only genuine parts.

5. As needed, upholstery may be cleaned with a mild solution of soap and water. Regular use of a vinyl treatment will add to the life and appearance of your upholstery.

6. All chrome plated surfaces should be cleaned regularly to prolong the life and luster of the finish. Wipe machine down with a damp cloth and dry thoroughly each day. At least once a week your chrome equipment should be polished with a commercial grade or automotive type chrome polish.

7. When checking the bolts and nuts, be sure they are all fully fastened. If there is a bolt or nut that continuously loosens obtain a replacement through your local retailer.

8. Check welds to be free of cracks.

9. Failure to perform routine maintenance could result in personal injury and/or equipment damage.

**WORLDWIDE DISTRIBUTOR**  
**Renouf**  
**FITNESS**  
**AUSTRALIA**  
**WWW.RENOUFFITNESS.COM.AU**