

ANT+ Display assembly manual

Note

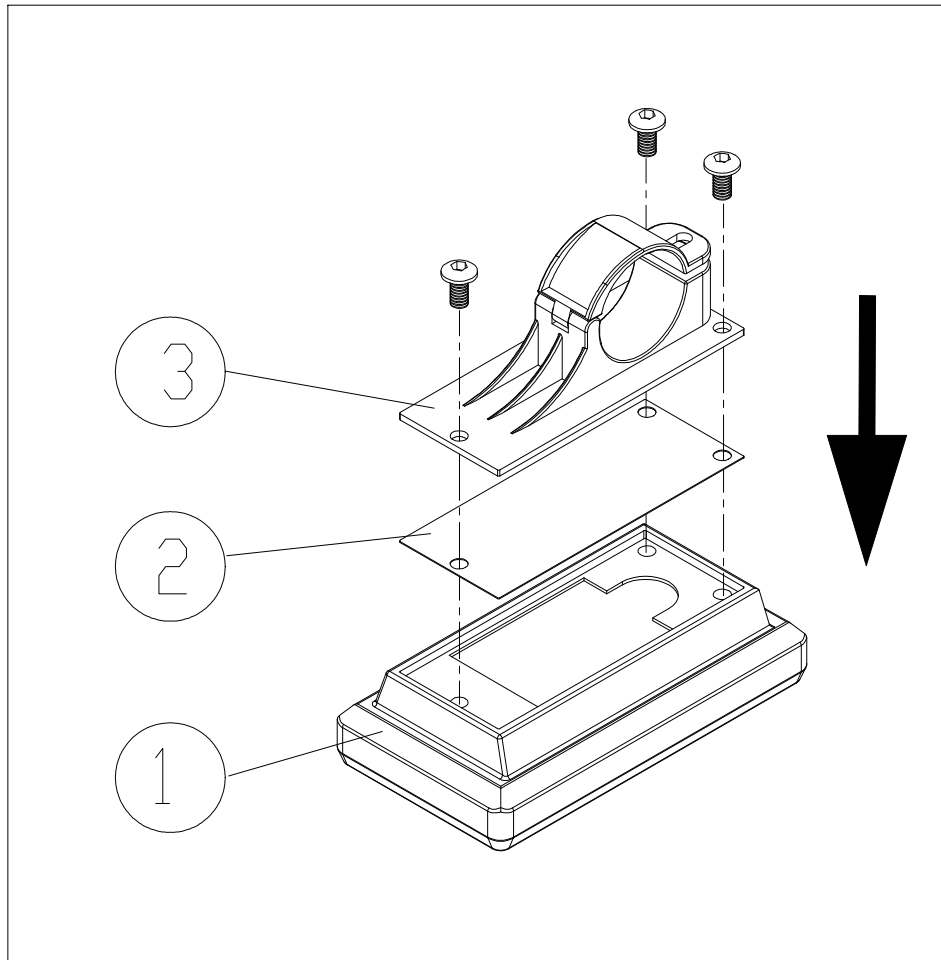
For C510

No.

1

Install the Display

Assemble the display (1), water-resistant membrane (2), and display bracket (3) in the order shown below. Note: In installing the water-resistant membrane, put the rough side up.



ANT+ Display assembly manual

Note

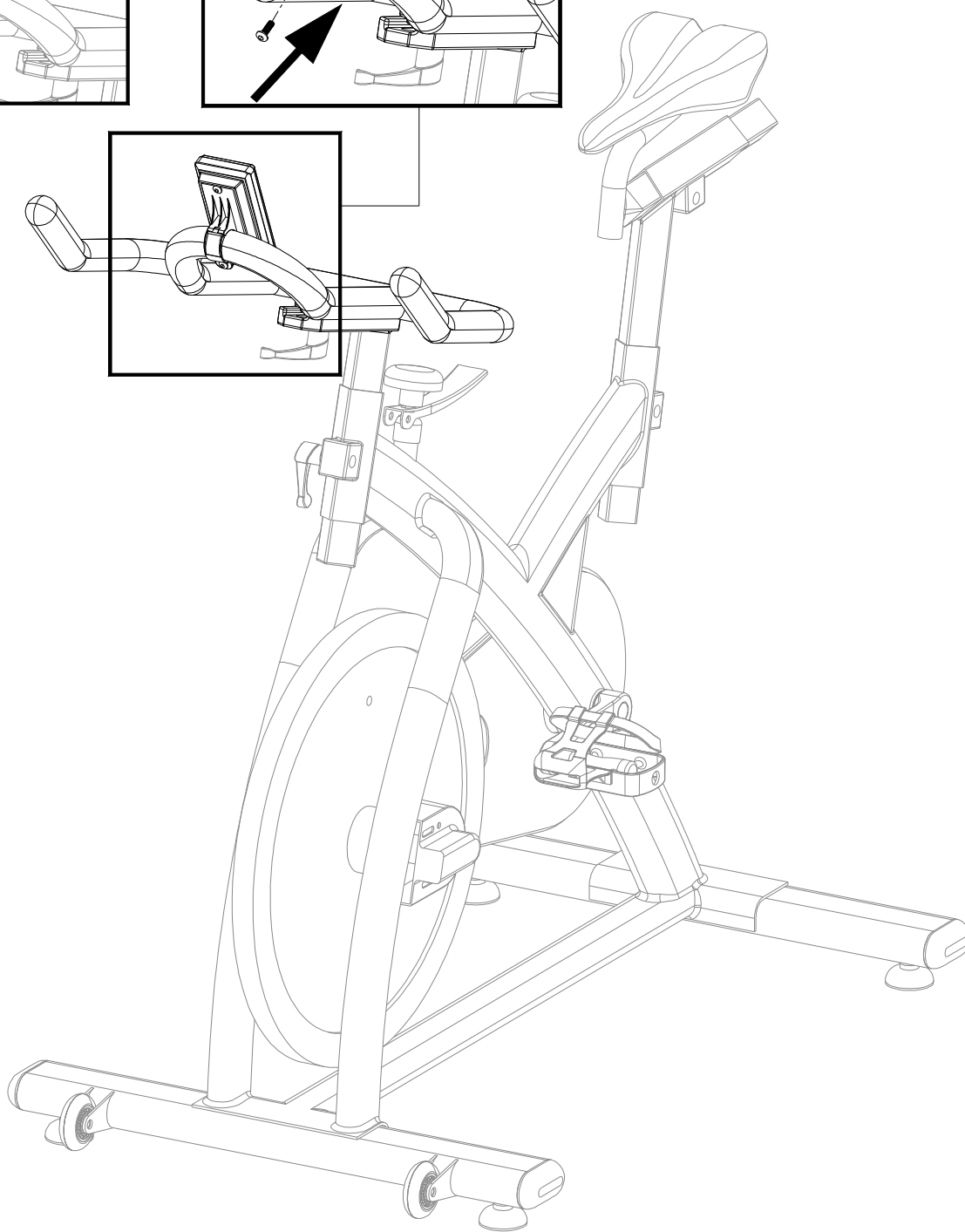
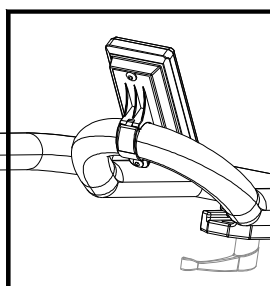
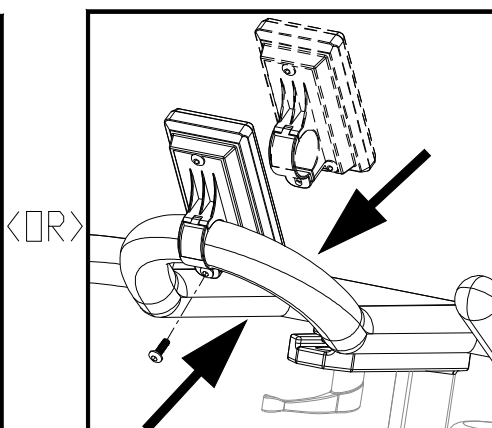
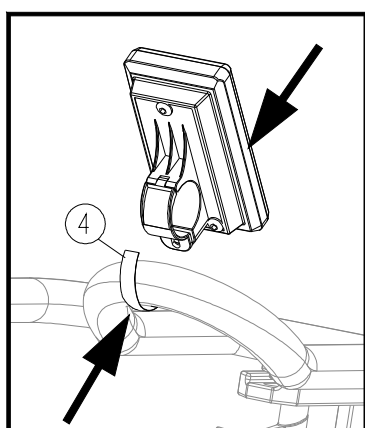
For C510

No.

2

Display Placement

Please secure the display to the handlebars as shown below. First, center the display. Then secure it with screws. If needed, add rubber strips (4) to narrow the gap between the handlebar and the clamp before securing the bracket.



ANT+ Display assembly manual

Note

For C510

No.

3

Transmitter Placement

Use zip ties to loosely secure the transmitter onto one fork of the bike. Align the transmitter with the magnet on the flywheel. Press the button on the transmitter. An LED will light briefly then extinguish. With your hand, rotate the flywheel. The LED should light when the magnet aligns with the transmitter. If the LED does not light or lights twice, the signal is not being received properly. Adjust the transmitter position. When the transmitter works properly, pull the end of the zip ties to secure the transmitter into place. Then cut off the loose ends of the zip ties.

