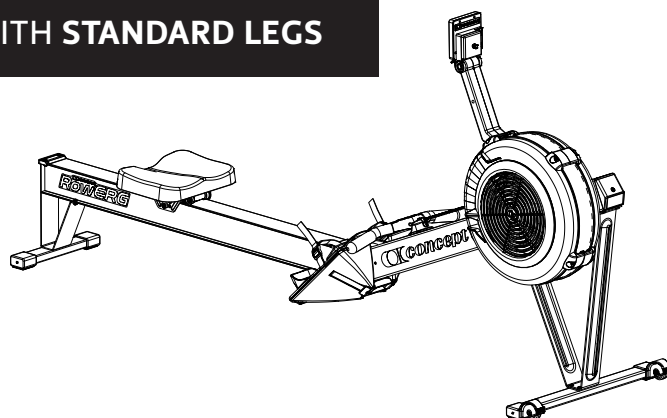


concept 2 **ROWERG** ASSEMBLY INSTRUCTIONS

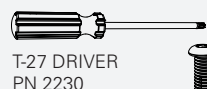
Weight: 57 lb (26 kg)
 Dimensions: 8 ft x 2 ft (244 cm x 61 cm)
 Space Required for use: 9 ft x 4 ft (274 cm x 122 cm)
 Weight Capacity: 500 lb (227 kg) as tested by Concept2*
 *300 lb (135 kg) as tested per European Stationary Fitness
 Equipment Testing Standard EN 20957-7

WITH STANDARD LEGS



PARTS

*not to scale



T-27 DRIVER
PN 2230

x 8
3/4" (1.9 cm)
PN 2233



x 1
3.25" (8.26 cm)
PN 1224

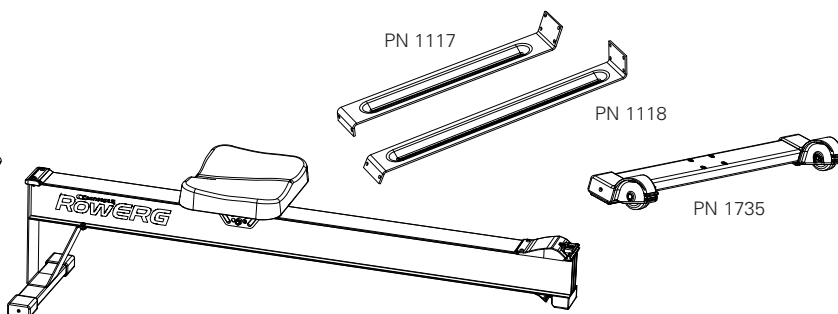
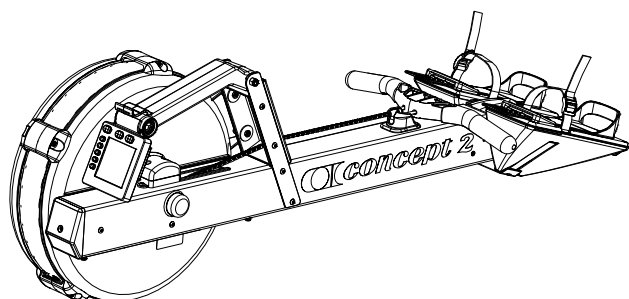


x 1
Knob
PN 7101



PN 7099

DEVICE HOLDER PARTS



PN 1117

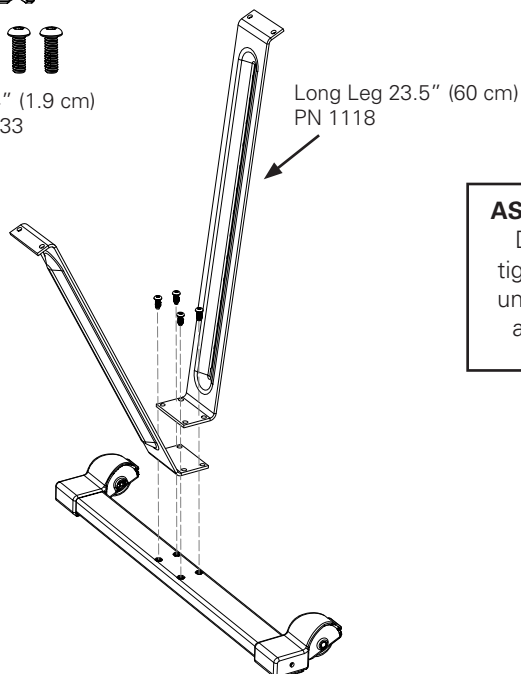
PN 1118

PN 1735

1

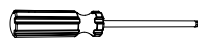


(4) 3/4" (1.9 cm)
PN 2233

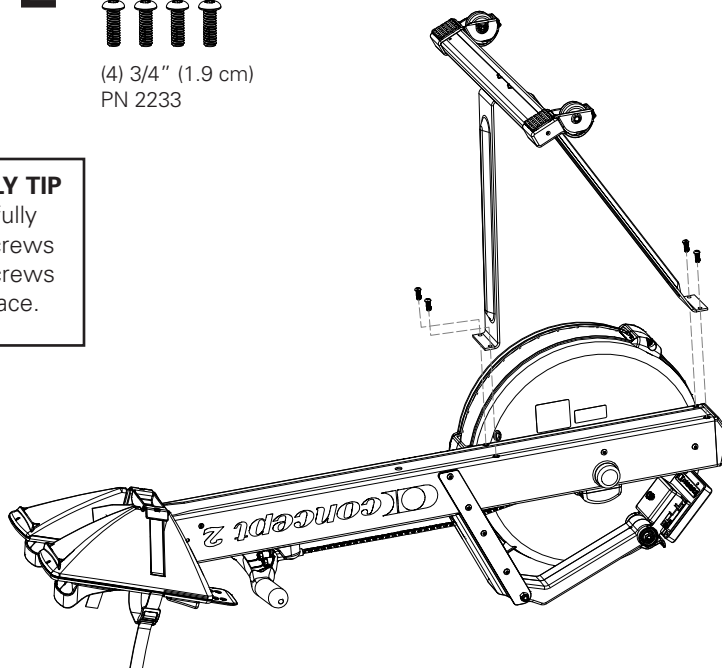


Long Leg 23.5" (60 cm)
PN 1118

2



(4) 3/4" (1.9 cm)
PN 2233



ASSEMBLY TIP

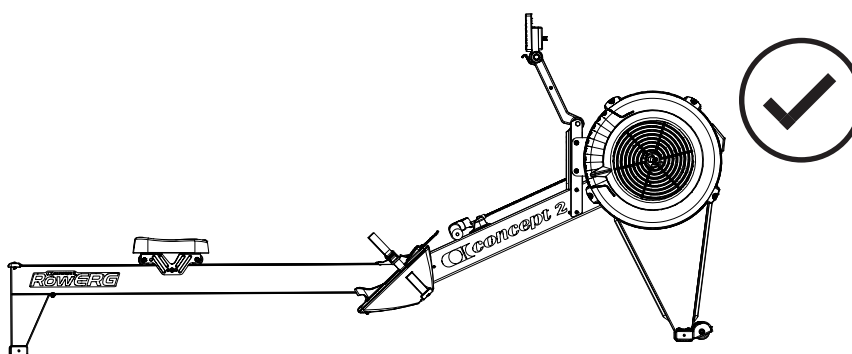
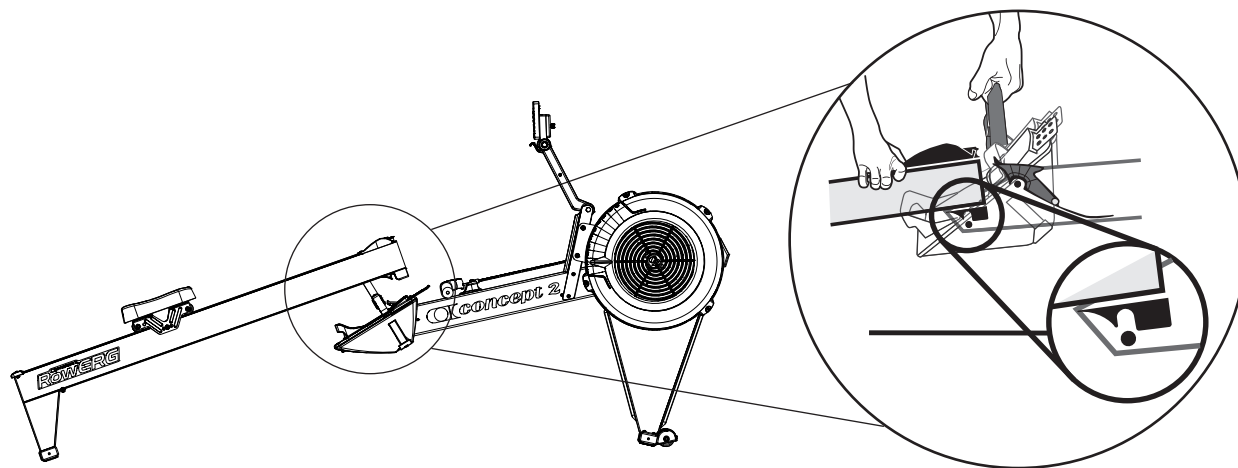
Do not fully
tighten screws
until all screws
are in place.



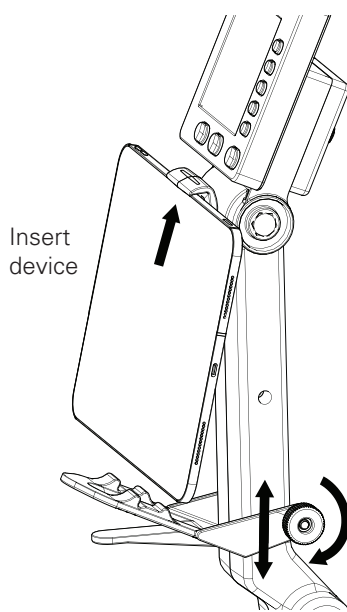
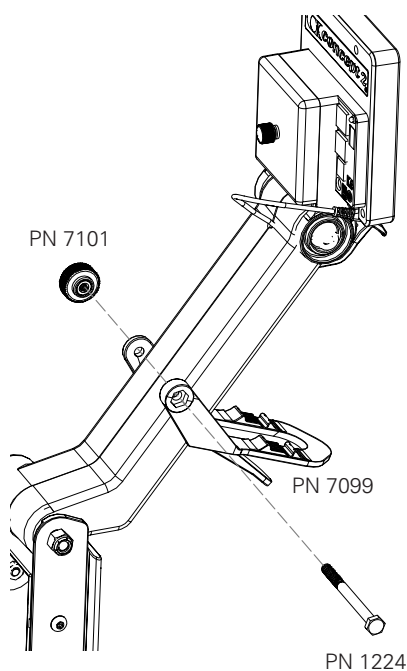
Questions? Comments? Problems?

Contact Concept2 directly at **800.245.5676** (US and Canada)
 Or visit us online: **concept2.com**

3



How to Use the Device Holder



Loosen knob to slide lower bracket up or down.
Important: Tighten knob when device is in place.

