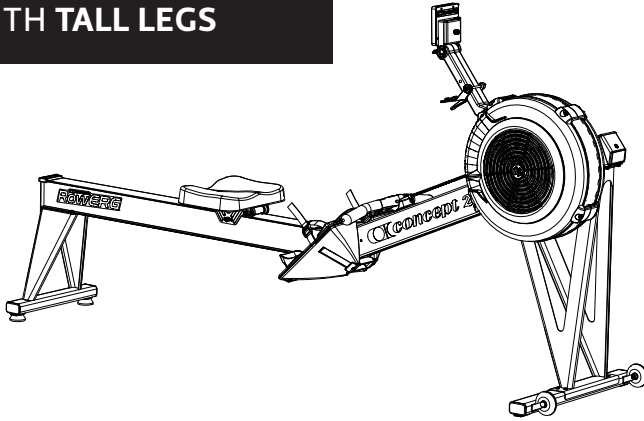


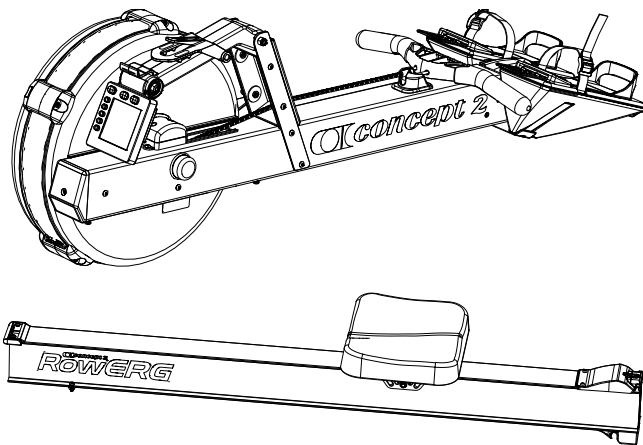
ROWERG WITH TALL LEGS ASSEMBLY - PAGE 2
TALL LEGS RETROFIT - PAGE 4

WITH TALL LEGS



Weight: 68 lb (31 kg)
Dimensions: 8 ft x 2 ft (244 cm x 61 cm)
Space Required for use: 9 ft x 4 ft (274 cm x 122 cm)
Weight Capacity: 500 lb (227 kg) as tested by Concept2*
*300 lb (135 kg) as tested per European Stationary Fitness Equipment Testing Standard EN 20957-7

RowErg Assembly
BOX 1



RowErg Assembly & Tall Legs Retrofit
BOX 2



T-27 DRIVER
PN 2230

Not to scale



x 8
3/4" (1.9 cm)
PN 2233

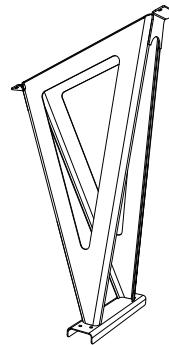


* x 4
5/8" (1.58 cm)
PN 2395

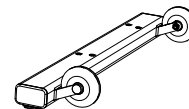


* x 4
PN 2394

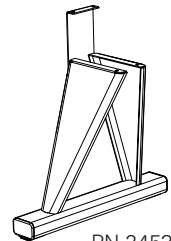
Note: There will be two remaining PN 2395 and two remaining PN 2394 after completing RowErg Assembly. **ALL** hardware will be used for Tall Legs Retrofit.



PN 7109



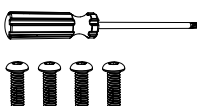
PN 2960

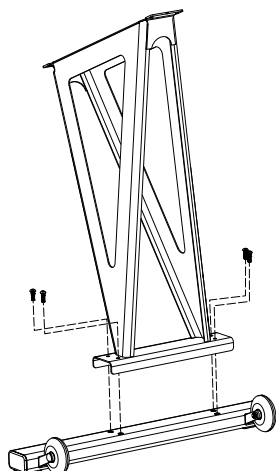


PN 2453

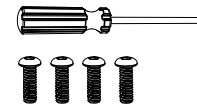


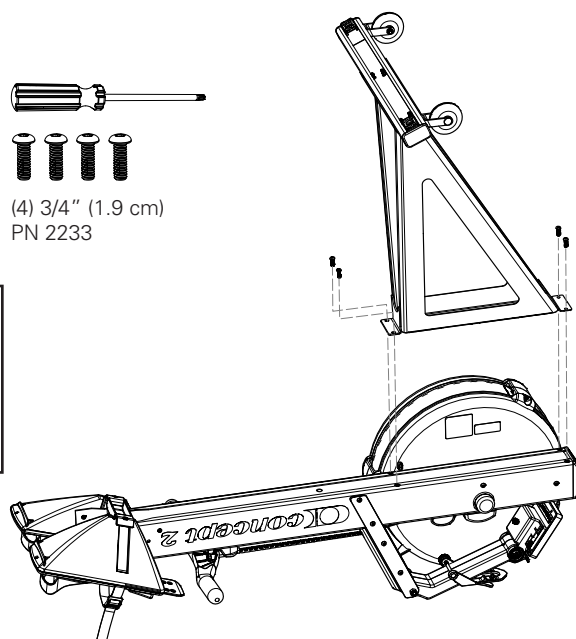
RowERG WITH TALL LEGS ASSEMBLY INSTRUCTIONS

- 1
- 
- (4) 3/4" (1.9 cm)
PN 2233

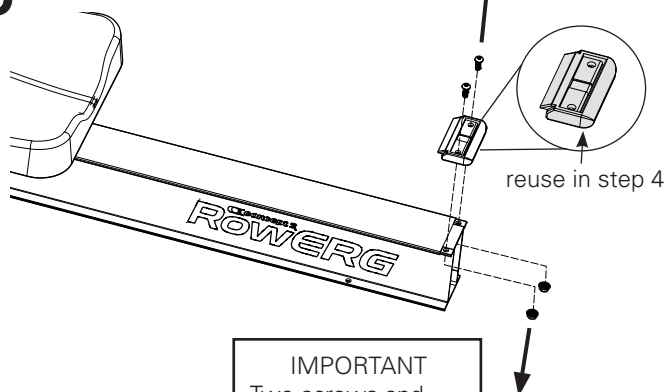


ASSEMBLY TIP
Do not fully
tighten screws
until all screws
are in place.

- 2
- 
- (4) 3/4" (1.9 cm)
PN 2233

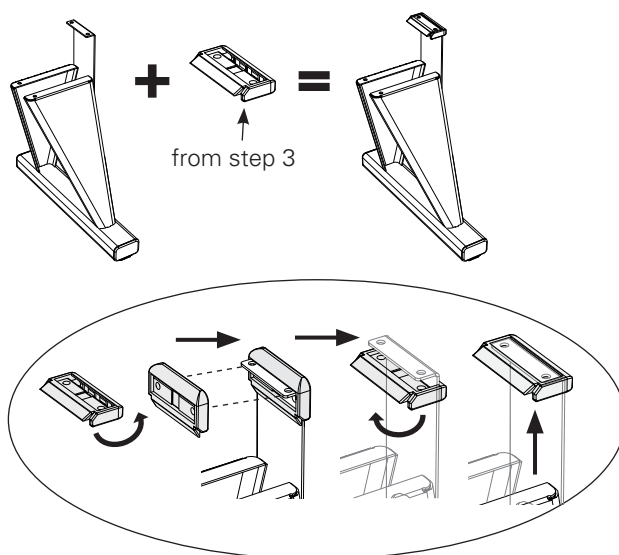


- 3
- 

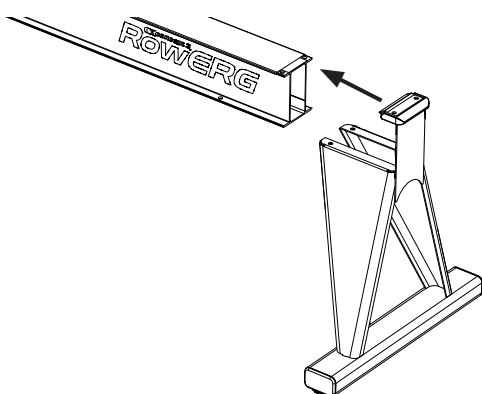


IMPORTANT
Two screws and
two nuts will be
reinstalled in step 6.

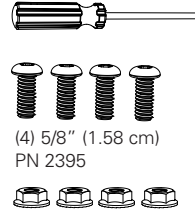
- 4

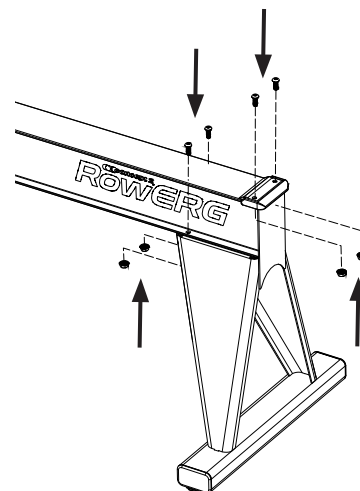


- 5

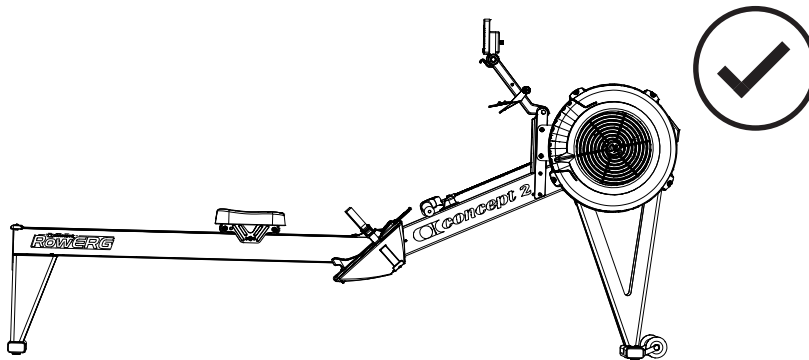
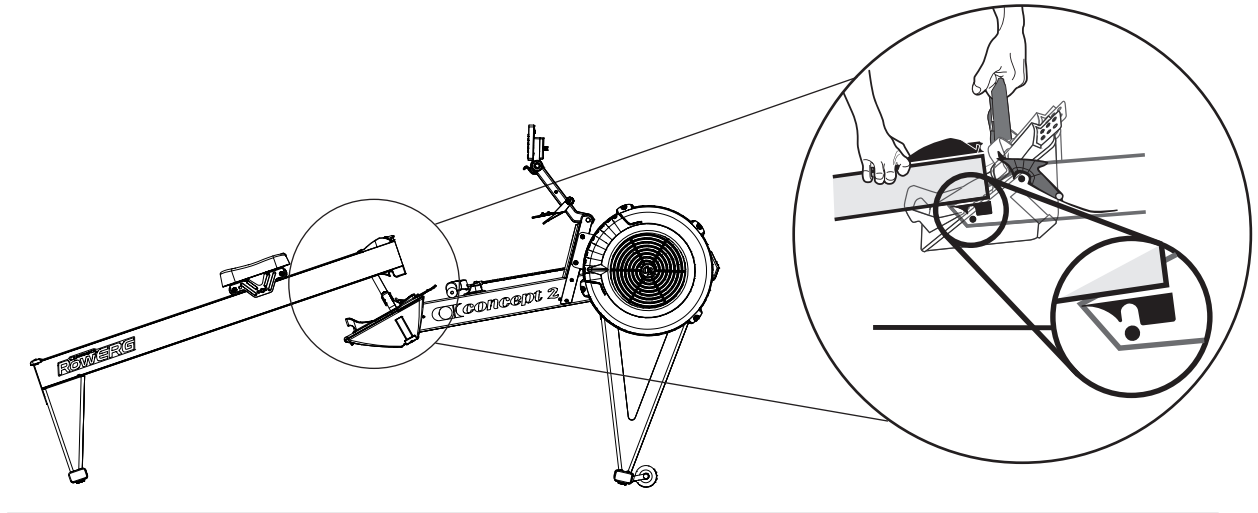


- 6

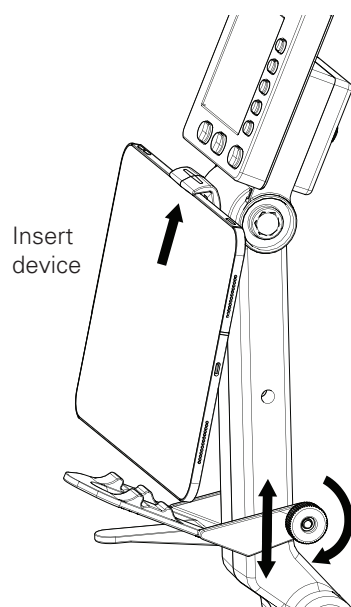
- 
- (4) 5/8" (1.58 cm)
PN 2395
(4) PN 2394



7

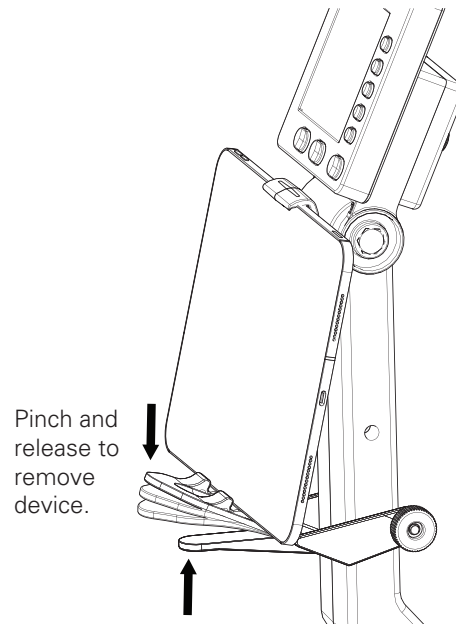


How to Use the Device Holder




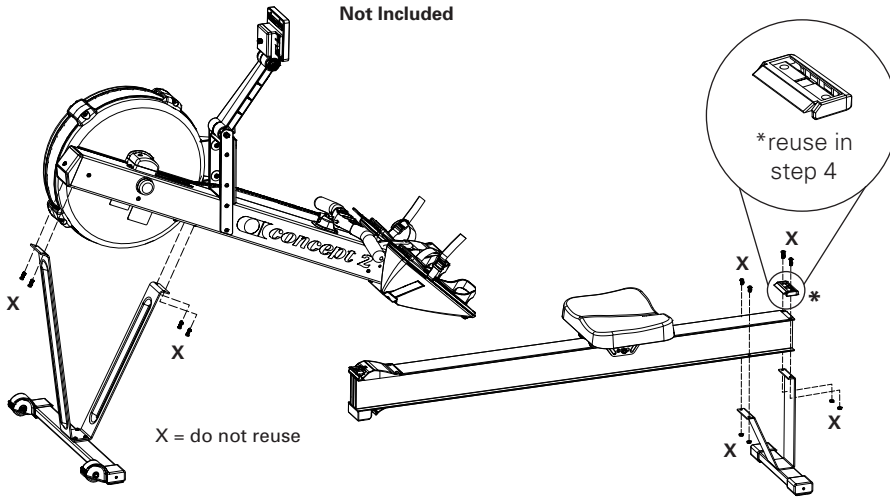
Loosen knob to slide lower bracket up or down.

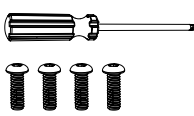
Important:
Tighten knob when device is in place.



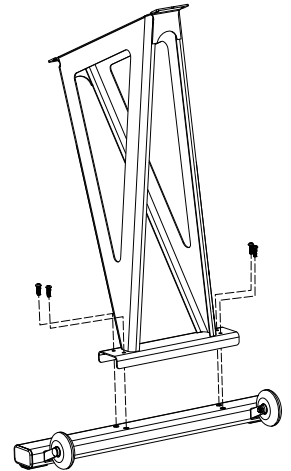
TALL LEGS RETROFIT INSTRUCTIONS (Refer to page 1, "Box 2" for parts list)

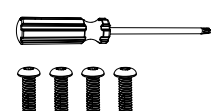
1 
7/16" Socket Wrench
Not Included



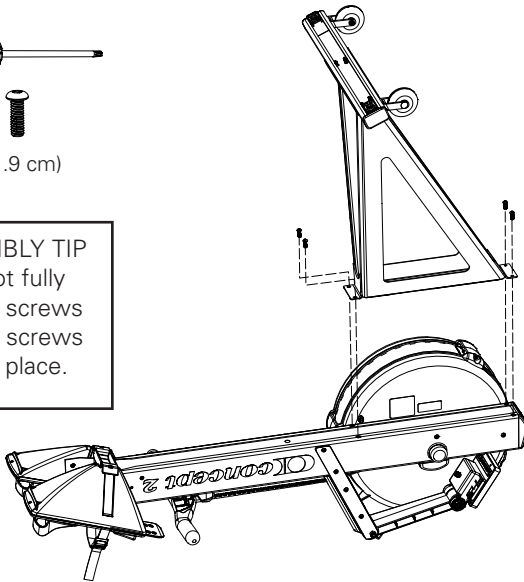
2 
(4) 3/4" (1.9 cm)
PN 2233

ASSEMBLY TIP
Do not fully
tighten screws
until all screws
are in place.

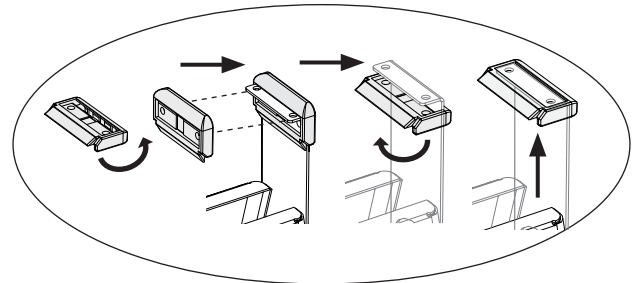
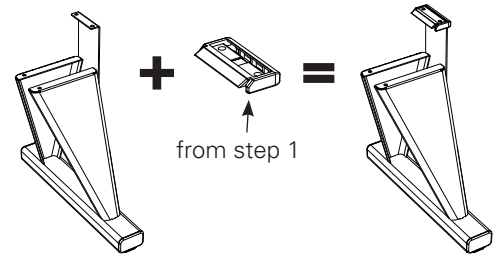


3 
(4) 3/4" (1.9 cm)
PN 2233

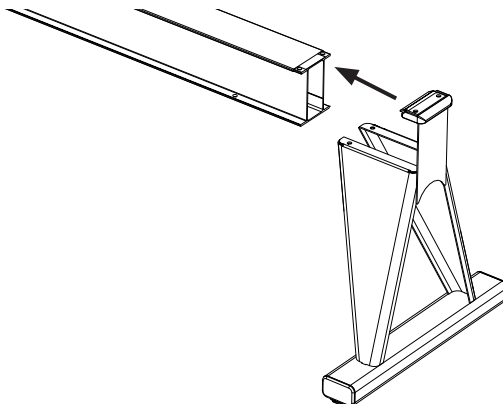
ASSEMBLY TIP
Do not fully
tighten screws
until all screws
are in place.



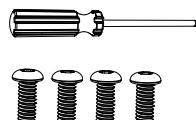

4



5



6


(4) 5/8" (1.58 cm)
PN 2395

(4) PN 2394

