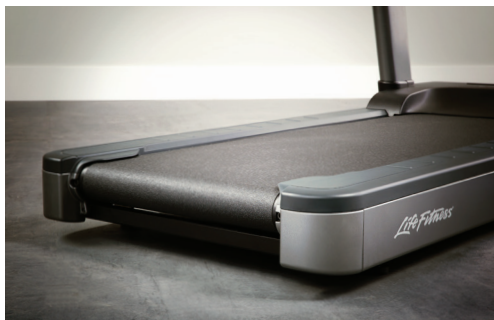


# CLUB SERIES+

## TREADMILL



### FLEXDECK SHOCK ABSORPTION SYSTEM

Reduces knee and joint stress by up to 30% more than non-cushioned surfaces. Eight incredibly durable Lifespring™ shock absorbers deliver consistent cushioning.



### ROOM TO RUN

A wide running surface of 22" (56 cm) is the same size as commercial treadmills. The low 8" (20 cm) step-up height makes it easy to get started.



### SWING-FREE AREA

Open space near the console provides room whether you're running or walking. Speed and resistance controls in the handles make it easy to change up your workouts.



### BUILT TO LAST

Built with the same rugged durability as the treadmills found in busy health clubs. The Club Series+ promises to be your trusted home workout partner for the long haul.

The Club Series+ Treadmill is rooted in more than 20 years of reliability and cardio excellence that is favored in health clubs around the world. This treadmill offers intuitive technology, advanced features and a modern frame design that looks and fits great in your home. Now that's a plus.



# S<sup>+</sup> CLUB SERIES<sup>+</sup>

## TREADMILL

### BASE FEATURES

DX3™ Belt and Deck System (belt tracking system)	•
FlexDeck® 2.0 Shock Absorption System (8 Lifespring shock absorbers)	•
Speed Range	0.5 - 12 mph (0.8 - 19 kph)
Rollers: 3.5" (9 cm) precision crowned steel rollers, front and back	•
Incline	0-15%
Motor System: 4-HP AC Continuous Duty (8-HP Peak Duty) Motor. Motor efficiency rated IE2 at 2-HP	•
Side handrails	24" (61 cm)
Removable locking cup holders	2
Integrated accessory tray	•
Remote speed and incline controls	•

### FRAME

Cast aluminum lower side rails and end caps	•
Brushed stainless steel vent detail	•
Front wheels for easy mobility	•
Adjustment levelers for product stability	•
Quick-release removable shroud for simple serviceability	•
Robust paint (corrosion, stain, and chemical resistant coating)	•
Titanium Storm finish	•

### TECHNICAL SPECIFICATIONS

Running surface	22 x 60" (56 x 152 cm)
Step-up height	8" (20 cm)
Max user weight	400 lbs (181 kg)
Length	82" (209 cm)
Width	36" (92 cm)
Height	56" (142 cm)
Unit weight	434 lbs (197 kg)

### POWER REQUIREMENTS

All major voltage configurations (voltage outside U.S. may vary)	•
--	---

### WARRANTY\*

Parts	10 Years
Labor	1 Year
Frame and motor	Lifetime

\* Warranties outside the U.S. may vary. Specifications subject to change.

## CONSOLE OPTIONS:

Club Series+ includes these console choices



### SL CONSOLE

- Large, vivid LED display
- Apple Watch® compatibility

**Shop.LifeFitness.com**

© 2021 Life Fitness, LLC. All Rights Reserved. Life Fitness and FlexDeck are registered trademarks of Life Fitness, LLC and its affiliated companies and subsidiaries. Apple Watch is a registered trademark of Apple Inc. Samsung Galaxy Watch is a registered trademark of Samsung Electronics Co., Ltd. CO-003-21 (6.21)

*LifeFitness*